



*A UNEP Partner*

## COMMOCEAN: Visual Storytelling

[www.grida.no](http://www.grida.no)

# PFAS StoryMap

---



SOS  
**ZEROPOL**  
2030

(AKA Source to Sea – Zero Pollution 2030)



Funded by the European Union's Horizon Europe programme under grant agreement No.101060213.

# Visuals

---

# Visuals

---



**Graphics**

# Visuals

---



**Graphics**



**Maps**

# Visuals

---



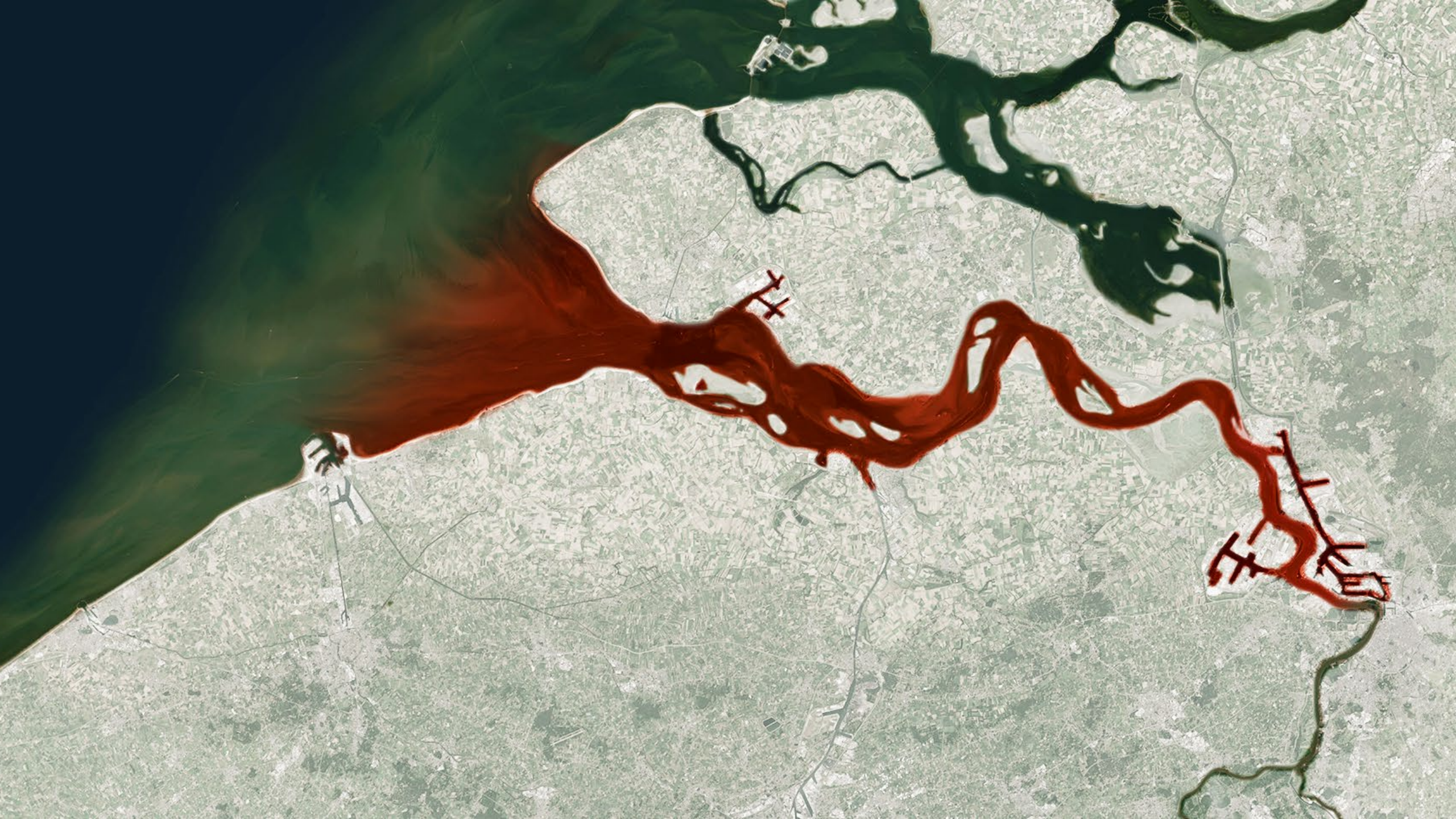
**Graphics**

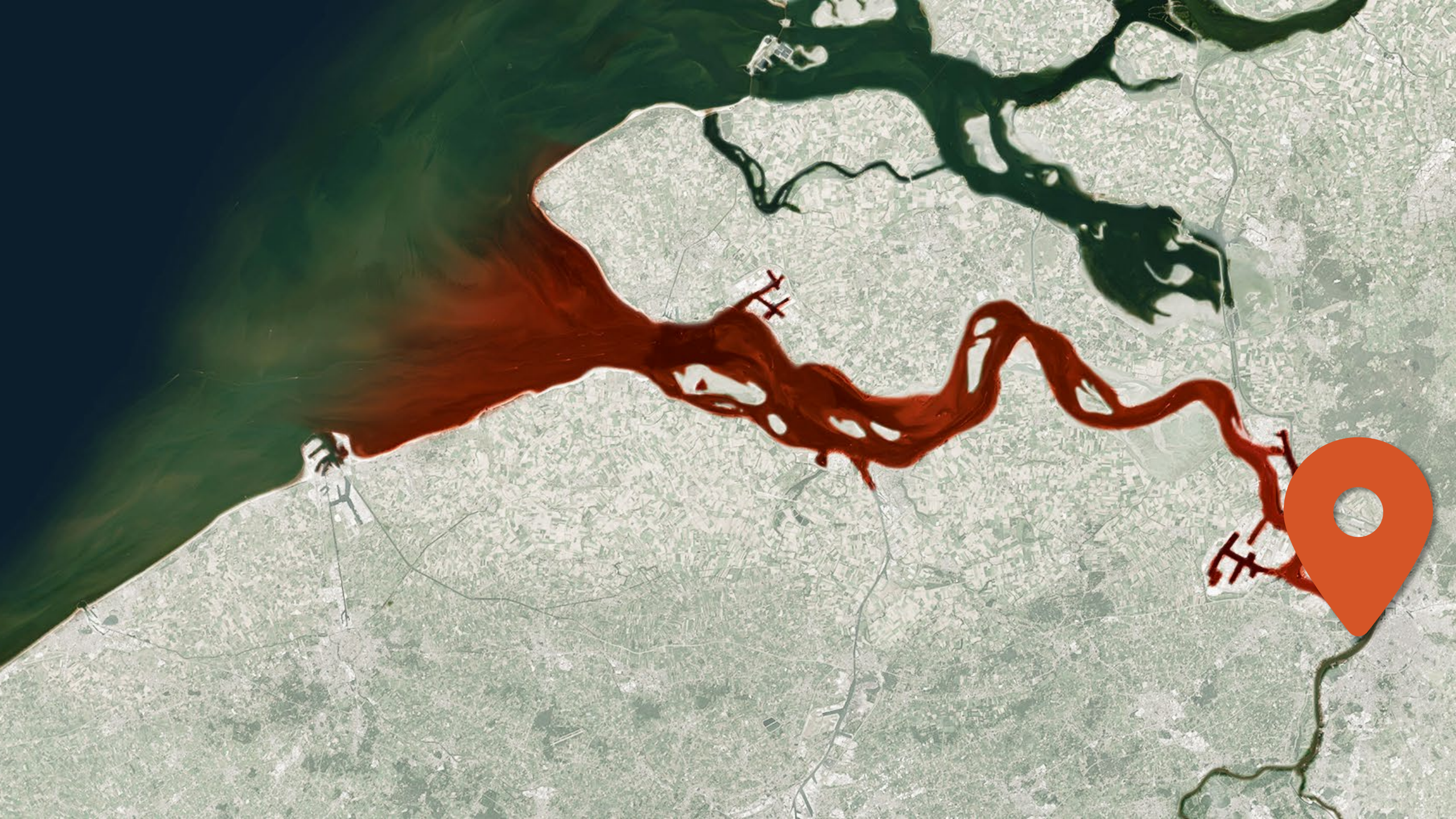


**Maps**




**Videos**

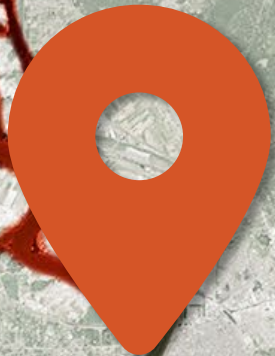


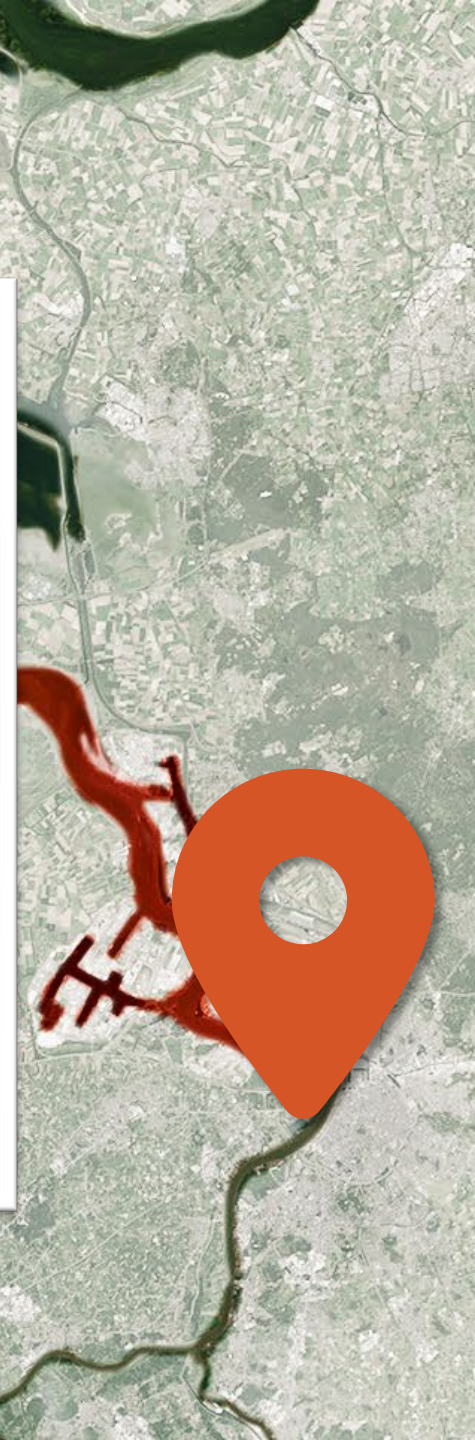
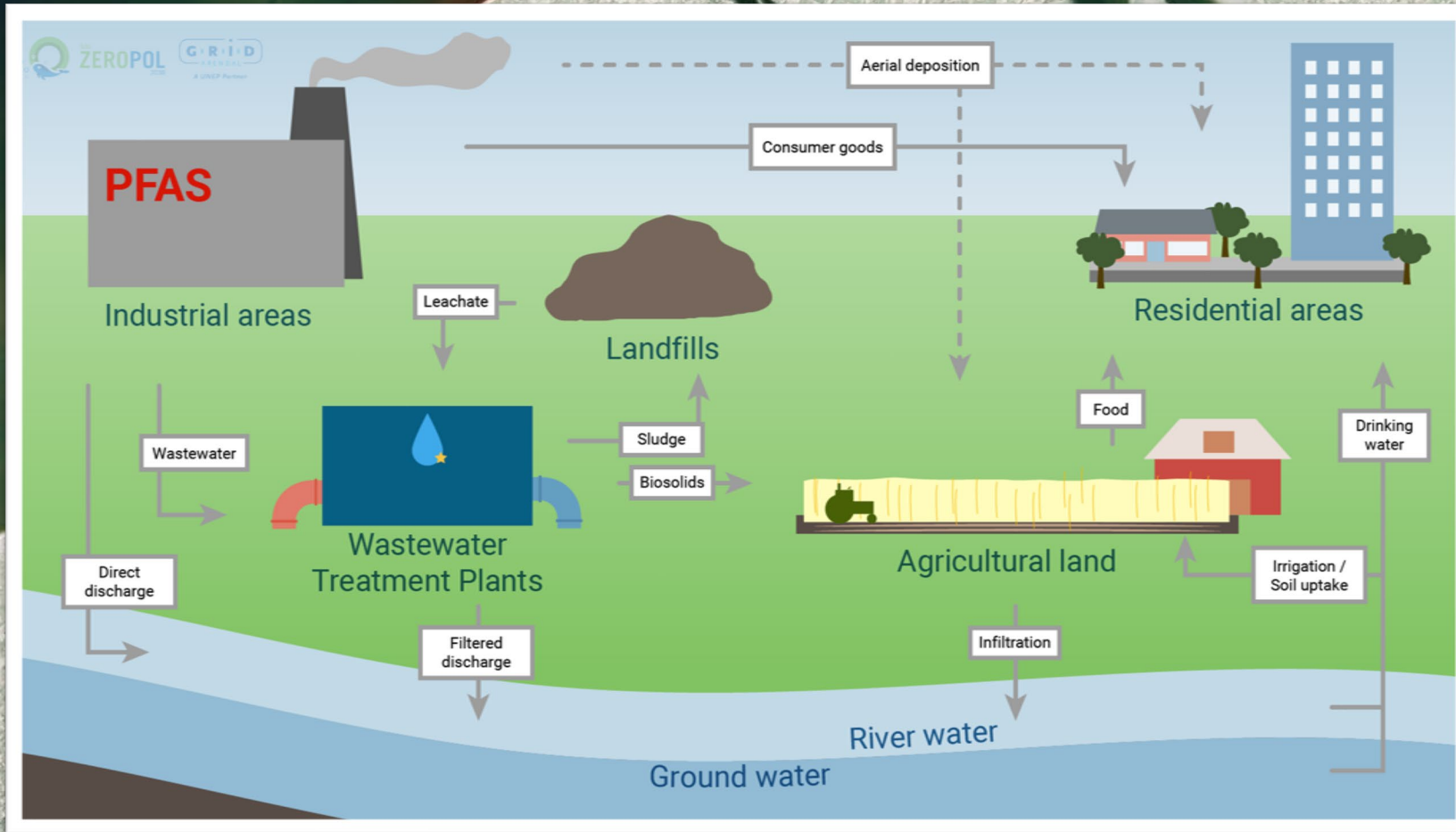


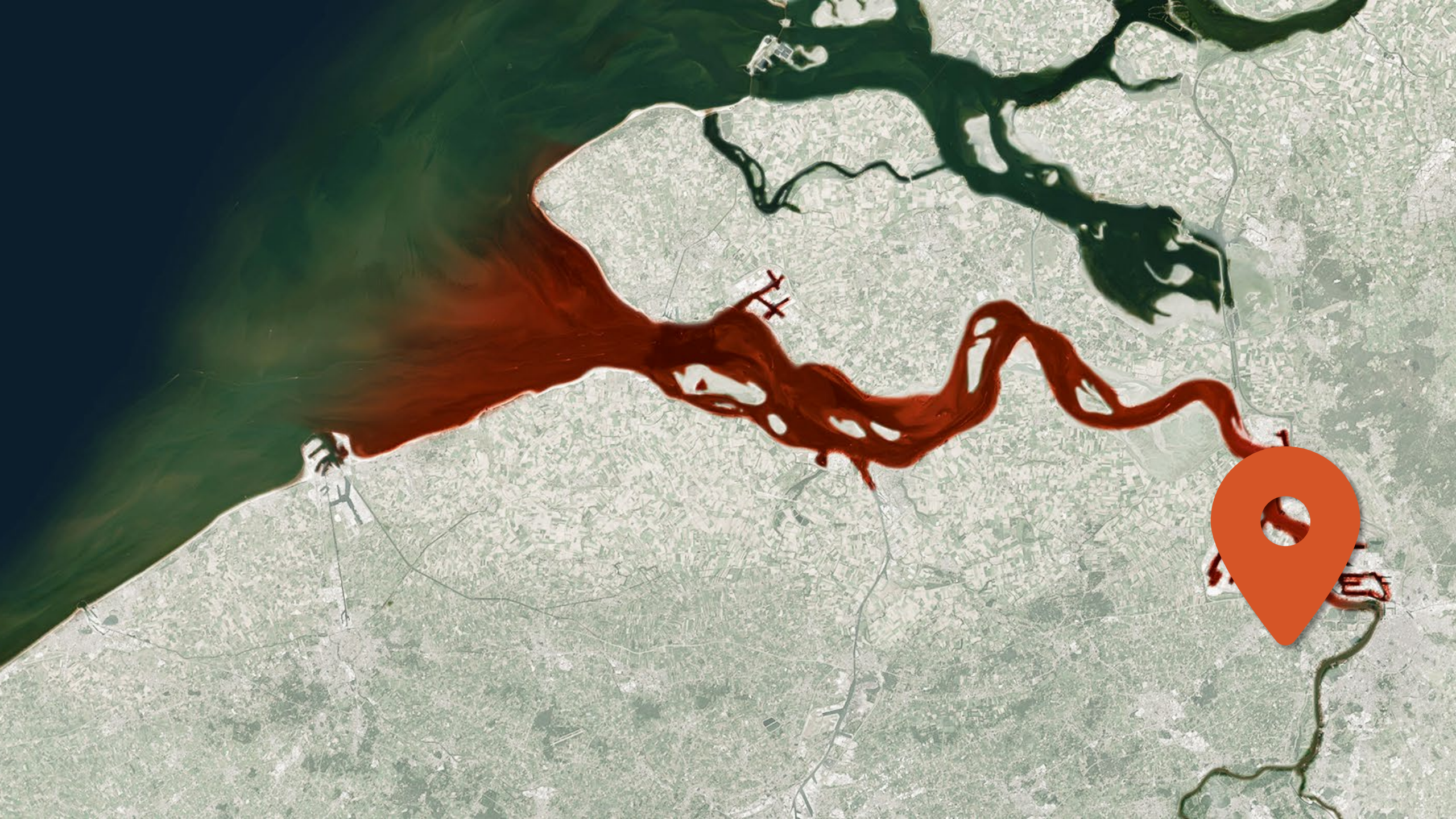



An aerial photograph of a coastal region. A large, irregularly shaped area of water is colored a deep red, contrasting with the surrounding green and blue water. A yellow speech bubble with a black outline is positioned in the upper right quadrant, containing the text 'We make PFAS here' and a smiley face emoji. In the lower right corner, there is a red location pin icon. The land area is a mix of green fields and grey urban or industrial structures.

We make  
PFAS here

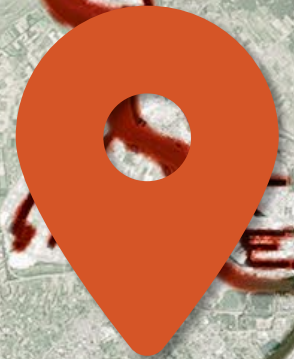









We eat  
PFAS here

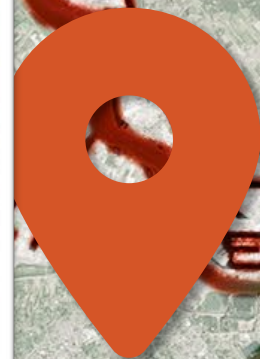
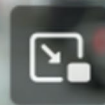





Interview: Farmer's market



"Oh, later in life this and that...  
and my health..."



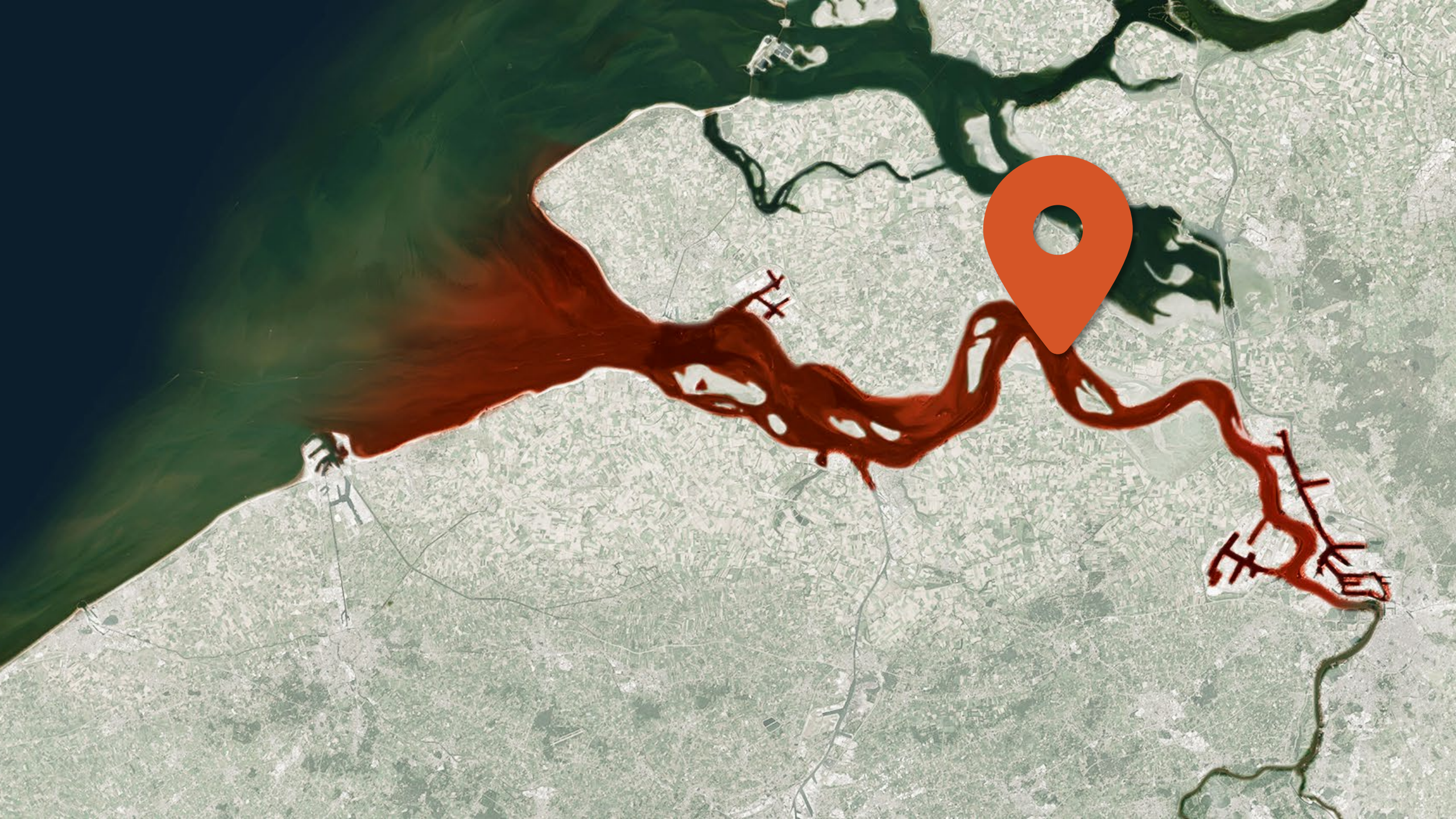



Interview: Farmer's market



“  
*I actually find it quite scandalous that this is coming out now, and that the people have to avoid [eating from] their own vegetable garden and go to the grocery store instead.*

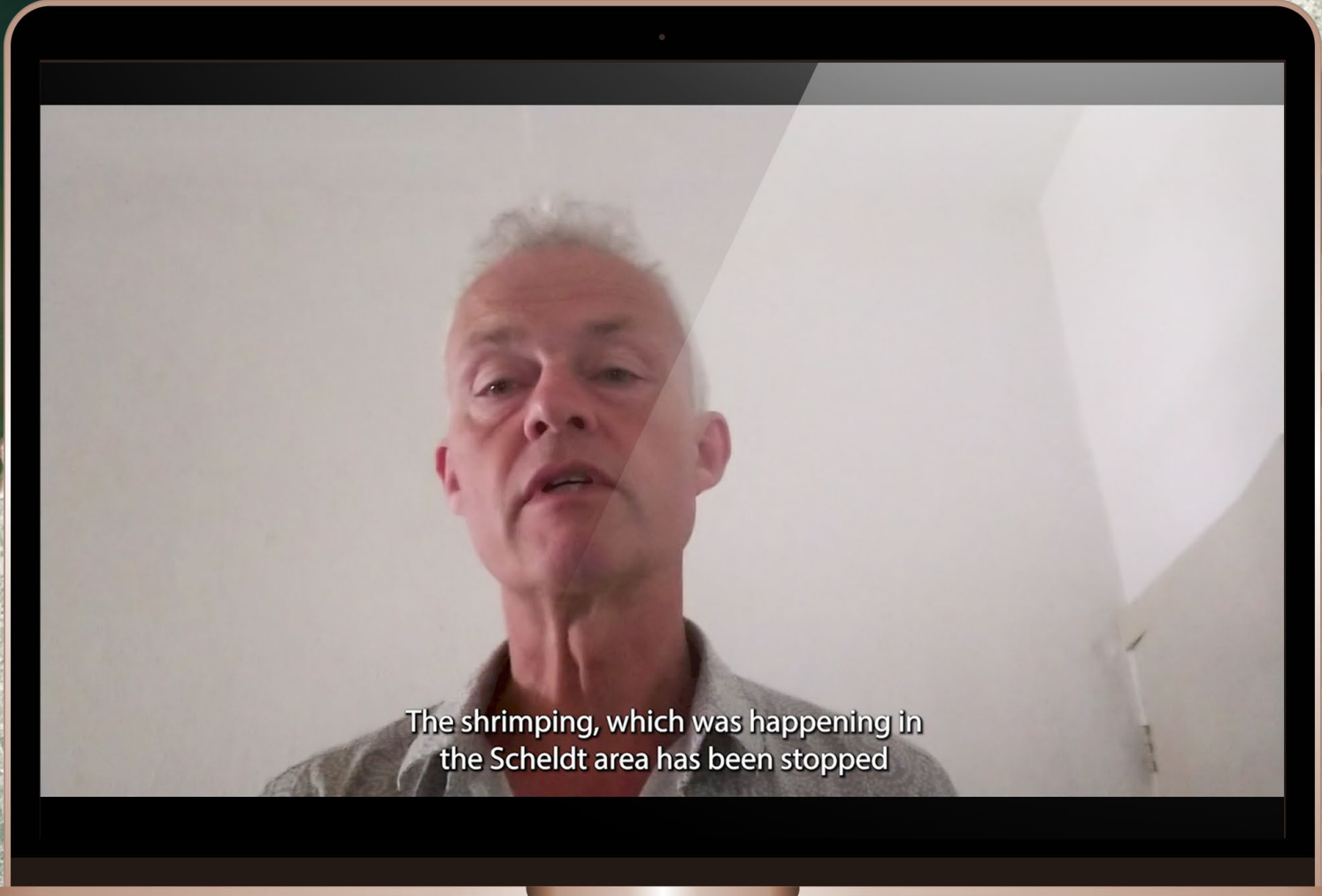
*Local resident*



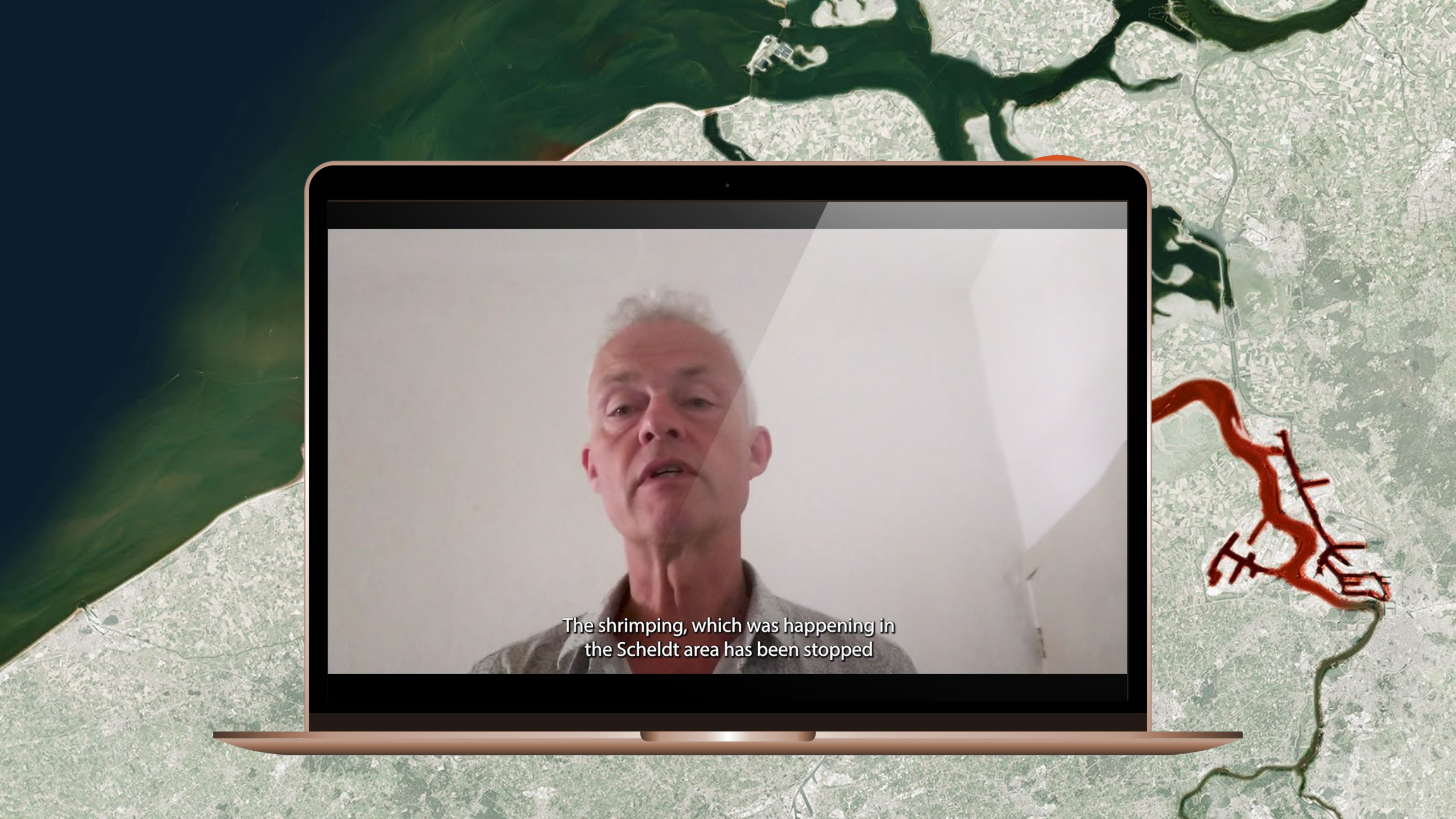
An aerial photograph of a coastal region. A large body of dark green water is on the left. A wide, winding river with a reddish-brown hue flows from the top right towards the bottom right. The surrounding land is a mix of green fields and grey urban areas. A yellow speech bubble with a black outline is centered over the river. An orange location pin is placed on the river to the right of the speech bubble.

We can't  
eat the fish  
we fish..






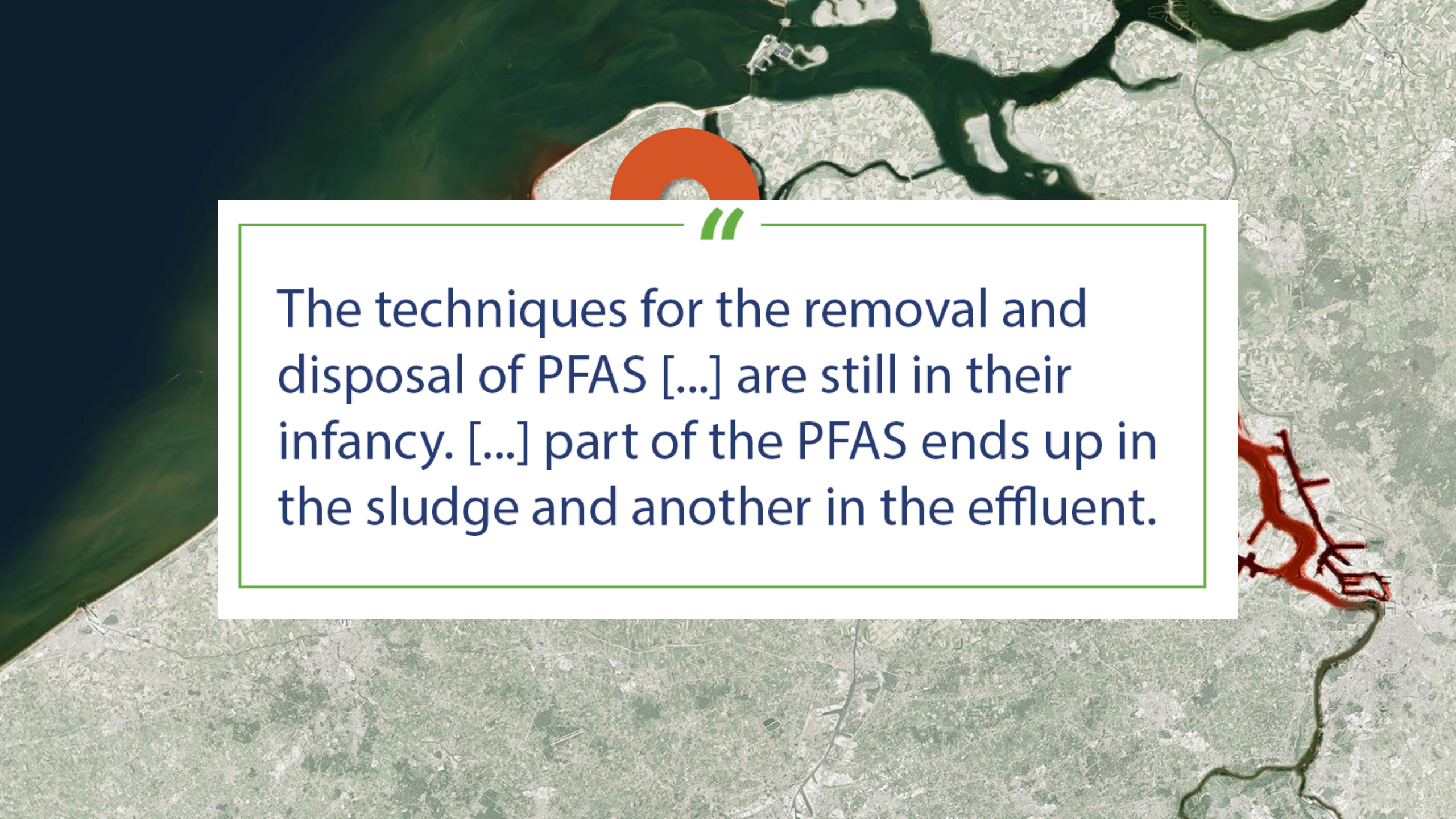
The shrimping, which was happening in the Scheldt area has been stopped





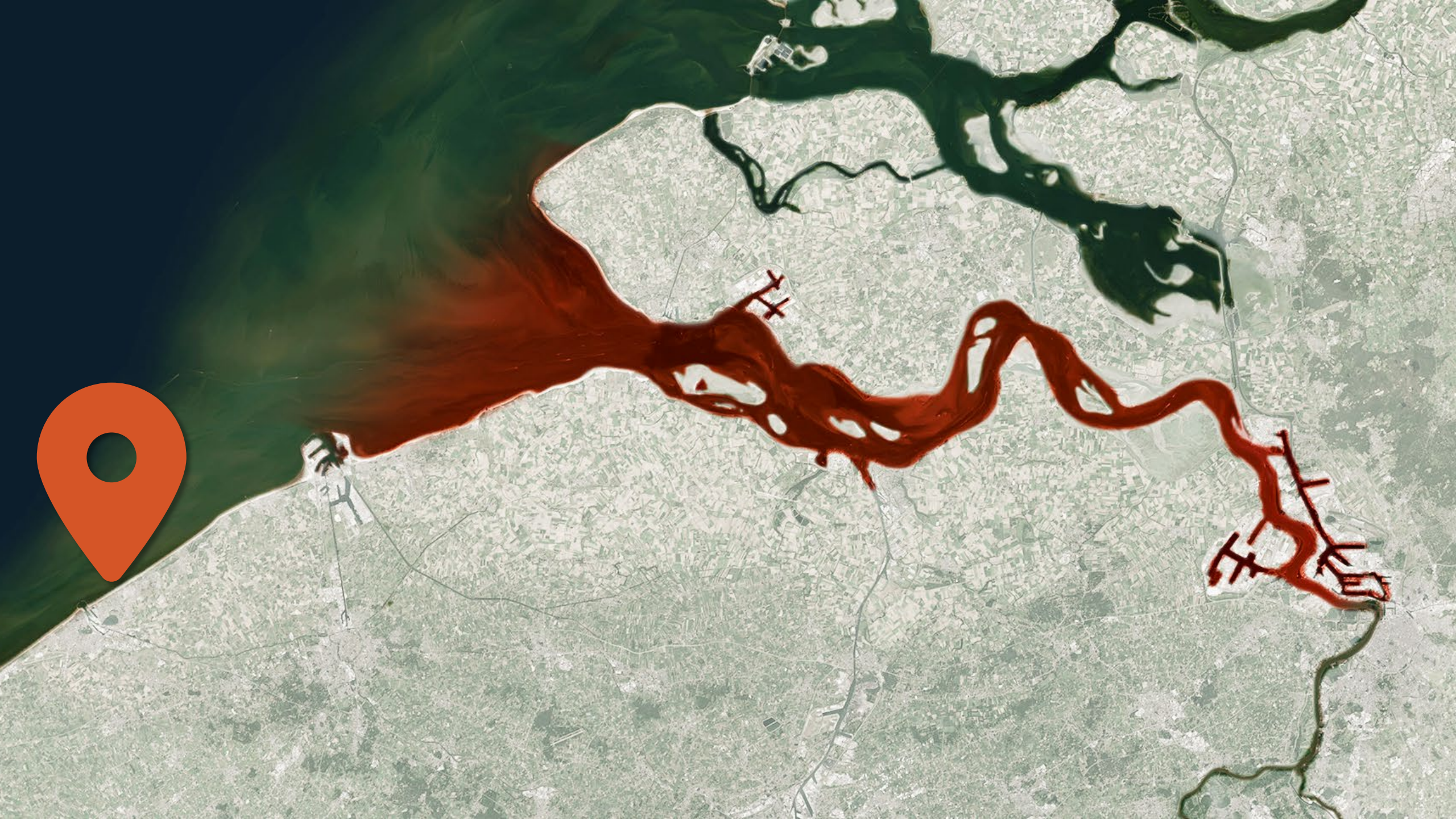
An aerial photograph of a coastal region, likely a bay or estuary, showing a network of waterways. A prominent red location pin is placed on a peninsula. A yellow speech bubble with a white border is overlaid on the image, containing the text "We can't clean your tap water". The water in the bay is a dark, murky green, while the water in the channels is a reddish-brown color. The surrounding land is a mix of green fields and grey urban areas.


We can't  
clean your  
tap water

An aerial photograph of a coastal region with a winding river and a large orange semi-circle graphic. The text is overlaid on a white box with a green border.

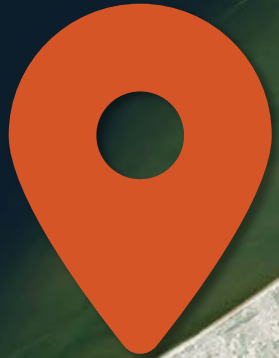
“

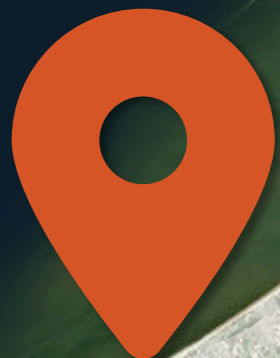
The techniques for the removal and disposal of PFAS [...] are still in their infancy. [...] part of the PFAS ends up in the sludge and another in the effluent.



An aerial photograph of a coastal region, likely a bay or estuary. A prominent red line is drawn across the land, tracing a path that follows the coastline and then moves inland through agricultural fields and some buildings. The water is a dark greenish-brown color. A yellow speech bubble is overlaid on the image, containing text. A red location pin icon is also present on the left side.

Our mussels  
are fine 😊





We analyze at regular times  
and so on to see







# What's next?

---

- Experimentation
- Nonlinear storytelling?

# What's next?

- Experimentation
- Nonlinear storytelling?



Animations  
Click images below



Storymaps  
Click images below



Documentaries